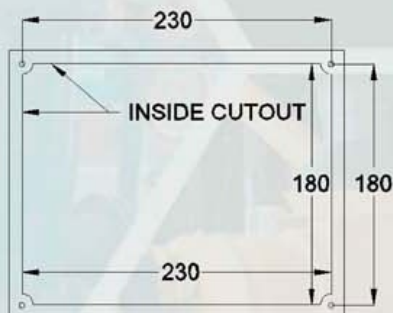
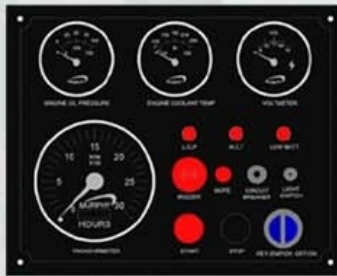


MARINE ENGINE PANEL

MODEL : RM4JBMEP-01
#202023



| | DESCRIPTION | PART NO | QTY |
|----|---------------------------|----------------|-----|
| 01 | SPEED/ TACH HOUR METER | RDM20700249 | 01 |
| 02 | PRESSURE SWITCH GAUGE | RDM05702407 | 01 |
| 03 | TEMPERATURE SWITCH GAUGE | RDM10701294 | 01 |
| 04 | VOLTMETER | RDM7870455 | 01 |
| 05 | ON/OFF KEY-SWITCH | RMSW-3A | 01 |
| 06 | START - PB | RDMXB5AA31 | 01 |
| 07 | STOP - PH | RDMXB5AA41 | 01 |
| 08 | BUZZER | RDMAD22-22SM | 01 |
| 09 | CIRCUIT BREAKER | RDMXDL-XB1-20A | 01 |
| 10 | MUTE | RDMXB5AA21 | 01 |
| 11 | LIGHT SWITCH | RM.TOGGL | 01 |
| 12 | L.O.P - LED | RM.12/24V.IND | 01 |
| 13 | H.C.T - LED | RM.12/24V.IND | 01 |
| 14 | LOW BATT - LED | RM.12/24V.IND | 01 |
| 15 | GAUGE PLATE 250x200x3(mm) | RM.250.200.3 | 01 |

OPTIONAL ITEM



HARNES



SENSOR



MPU

MARINE ENGINE PANEL

Specifications

- Tach/Hour meters:**
 - Power Input: 10-32 VDC (100 mA max at 32 VDC, does not include backlight)
 - Backlight: LED, Red (75 mA max at 32 VDC)
 - Accuracy: Tachometer: +2% full scale
 - Hour meter: +/- 0.02%
 - Temperature Range: -40 to 185° F (-40 to 85° C)
 - Dial (Face Plate): 240° sweep with white numerals
 - Bezel: 304 stainless steel
 - Scale: 0-3000 RPM
 - Case Material: Nylon, 12% glass filled
 - Hour meter Range: 99999.9 hours in 0.1 increments.
 - Electromagnetic Compatibility: 2004/108/EC
- Pressure Senders:**
 - 0 PSI = 240 ohms (falling pressure)
 - 25 PSI = 153 ohms (falling pressure) (primary calibration point)
 - 50 PSI around 100 ohms (falling pressure)
 - 75 PSI = 67 ohms (falling pressure) (secondary calibration point)
 - 100 PSI = 33 ohms (rising pressure)
- Temperature Senders:**
 - Housing Material: Brass
 - Temperature Range: 100°-250°F (40°-120°C) or 140°-300°F (60°-150°C)



RM4JBMEP-01 Panel Wiring

