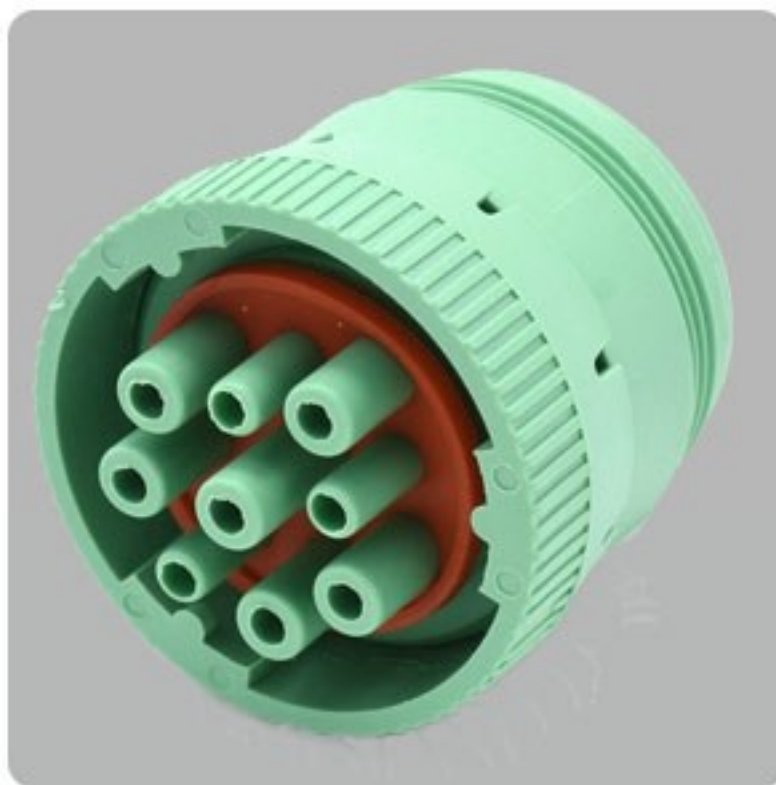
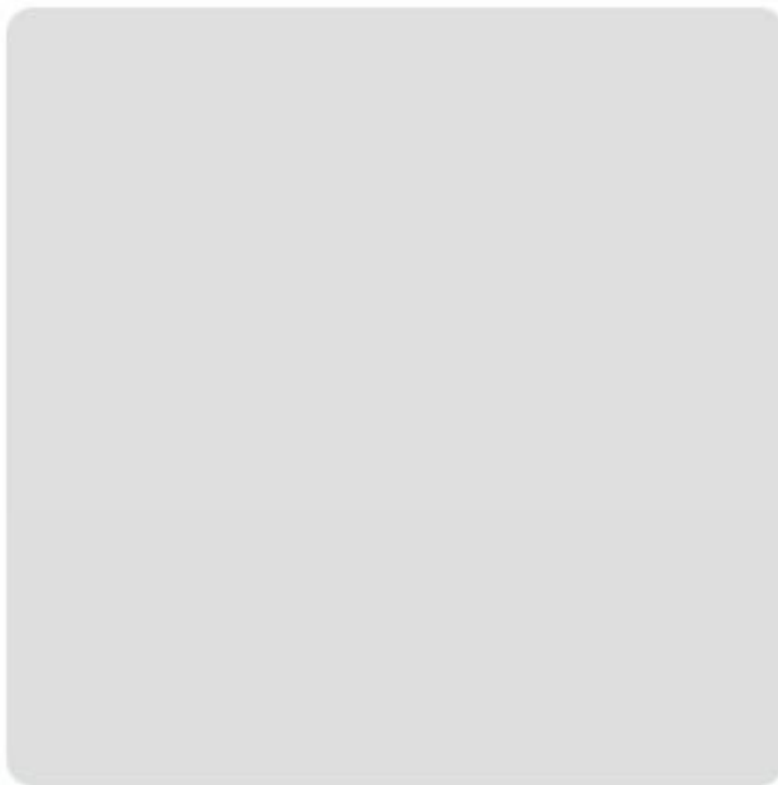




RAJKOT DIESEL MACHINES TR. EST.

Meeting the Unique Needs of Customers with a Complete Solution Approach



Rajkot Diesel Machines

CONTENTS

Product File.....	3
DT Series+Contacts.....	4
DTM Series+Contacts.....	15
DTP Series+Contacts.....	21
HD10 Series+Contacts.....	25
Accessories.....	32

DT,DTM, AND DTP SERIES ENVIRONMENTALLY SEALED CONNECTORS ARE DESIGNED FOR CABLE TO CABLE AND CABLE TO BOARD APPLICATIONS. THE DT CONNECTORS ARE USED IN HARSH ENVIRONMENT APPLICATIONS WHERE EVEN A SMALL DEGRADATION IN CONNECTION MAY BE CRITICAL. THERMOPLASTIC HOUSINGS OFFER A WIDE OPERATING TEMPERATURE RANGE AND SILICONE REAR WIRE AND INTERFACE SEALS ALLOW THE CONNECTORS TO WITHSTAND CONDITIONS OF EXTREME TEMPERATURE AND MOISTURE.

PERFORMANCE

Temperature: Operating at temperatures -55°C to $+125^{\circ}\text{C}$

- DTMH series: -55°C to $+150^{\circ}\text{C}$

Durability: No electrical or mechanical defects after 100 cycles of engagement and disengagement.

Fluid Resistance: Connectors show no damage when exposed to most fluids used in industrial applications.

Insulation Resistance: 1000 megohms minimum at 25°C .

Immersion: IP68 rating

Moisture Resistance: Properly wired and mated connections will withstand immersion under three feet of water without loss of electronic qualities or leakage.

Dielectric Withstanding Voltage: Current leakage less than 2 milliamps at 1500 volts AC.

Thermal Cycle: No cracking, chipping or leaking after 20 test cycles from -55°C to $+125^{\circ}\text{C}$.

MATERIAL SPECIFICATIONS

Grommet: Silicone rubber

Receptacle Interfacial Seal: Silicone rubber

Receptacle Threaded Inserts: Stainless steel

Shell: Glass filled PA

Wedgelocks: Glass filled PBT

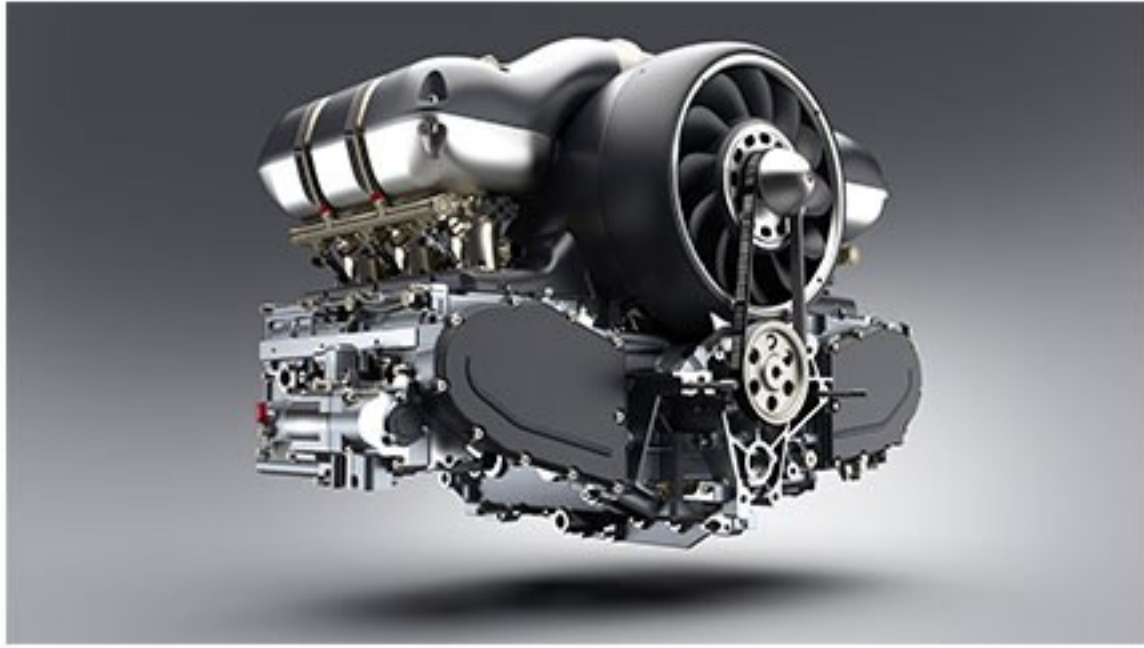


DT Series

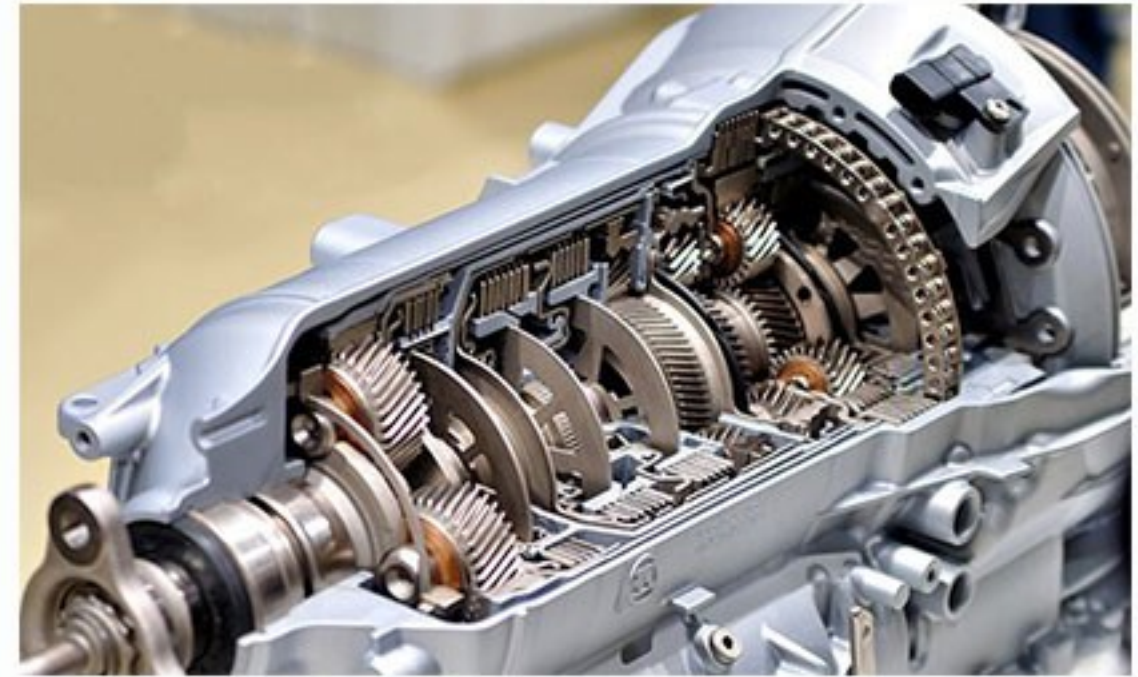


DT series connectors offer field proven reliability and rugged quality. The DT design strengths include optional flange mounting, multi-pin arrangements, and design flexibility.

The DT series offers the designer the ability to use multiple size 16 contacts, each with 13 amp continuous capacity, within a single shell.



On the Engine



On the transmission



Automotive Under the Hood

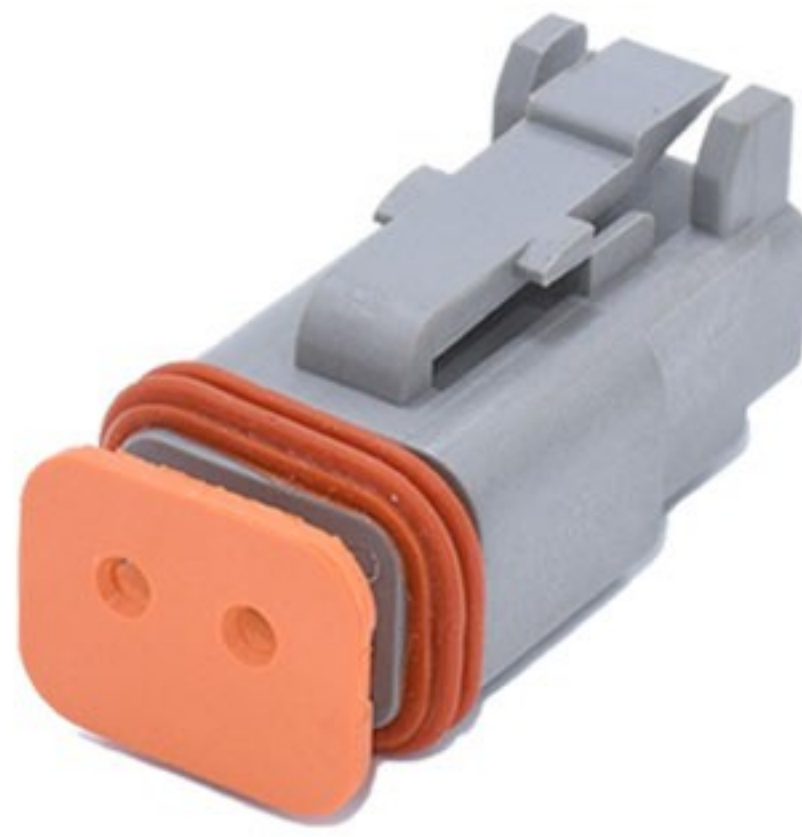


On the Chassis



In the Cab

The DEUTSCH DT series general purpose connectors will provide reliability and performance on the engine or transmission, under the hood, on the chassis, or in the cab.



PART NUMBER:	DT06-2S+W2S	DT04-2P+W2P
L*W*H (mm):	28.4*15.01*15.59	43.38*17.15*17.02
WEIGHT:	7.5g	7g
KEYED:	No	No
CURRENT RATING:	13	13
CONTACT SIZE:	16	16



PART NUMBER:	DT06-3S+W3S	DT04-3P+W3P
L*W*H (mm):	28.4*18.23*23.72	43.13*21.13*24.71
WEIGHT:	9.7g	10.1g
KEYED:	No	No
CURRENT RATING:	13	13
CONTACT SIZE:	16	16



PART NUMBER:	DT06-4S+W4S	DT04-4P+W4P
L*W*H (mm):	30.94*18.19*18.39	45.92*20.83*19.71
WEIGHT:	10.9g	11g
KEYED:	No	No
CURRENT RATING:	13	13
CONTACT SIZE:	16	16



PART NUMBER:	DT06-6S+W6S	DT04-6P+W6P
L*W*H (mm):	30.94*18.19*22.63	45.92*20.83*24.16
WEIGHT:	13.7g	13.3g
KEYED:	No	No
CURRENT RATING:	13	13
CONTACT SIZE:	16	16



PART NUMBER:	DT06-08SA+W8S	DT04-08PA+W8P
L*W*H (mm):	30.91*37.21*19.71	45.67*36.45*25.4
WEIGHT:	18.2g	22.5g
KEYED:	Key A	Key A
CURRENT RATING:	13	13
CONTACT SIZE:	16	16



PART NUMBER:	DT06-12SA+W12S	DT04-12PA+W12P
L*W*H (mm):	30.94*40.56*18.19	45.92*40.56*22.25
WEIGHT:	20.6g	22.6g
KEYED:	Key A	Key A
CURRENT RATING:	13	13
CONTACT SIZE:	16	16



PART NUMBER:	DT06-2S-E004+W2S-P012	DT04-2P-E004+W2P
L*W*H (mm):	28.4*15.01*15.59	43.38*17.15*17.02
WEIGHT:	7.5g	7g
KEYED:	No	No
CURRENT RATING:	13	13
CONTACT SIZE:	16	16



PART NUMBER:	DT06-3S-E004+W3S(GREEN)	DT04-3P-E004+W3P
L*W*H (mm):	28.4*18.23*23.72	43.13*21.13*24.71
WEIGHT:	9.7g	10.1g
KEYED:	No	No
CURRENT RATING:	13	13
CONTACT SIZE:	16	16



PART NUMBER:	DT06-4S-E004+W4S _(GREEN)	DT04-4P-E004+W4P
L*W*H (mm):	30.94*18.19*18.39	45.92*20.83*19.71
WEIGHT:	10.9g	11g
KEYED:	No	No
CURRENT RATING:	13	13
CONTACT SIZE:	16	16



PART NUMBER:	DT06-6S-E004+W6S _(GREEN)	DT04-6P-E004+W6P
L*W*H (mm):	30.94*18.19*22.63	45.92*20.83*24.16
WEIGHT:	13.7g	13.3g
KEYED:	No	No
CURRENT RATING:	13	13
CONTACT SIZE:	16	16



PART NUMBER: DT06-08SA-E004+W8S_(GREEN) DT04-08PA-E004+W8P

L*W*H (mm): 30.91*37.21*19.71 45.67*36.45*25.4

WEIGHT: 18.2g 22.5g

KEYED: Key A Key A

CURRENT RATING: 13 13

CONTACT SIZE: 16 16



PART NUMBER: DT06-12SA-E004+W12S_(GREEN) DT06-12SA-E004+W12P

L*W*H (mm): 30.94*40.56*18.19 45.92*40.56*22.25

WEIGHT: 20.6g 22.6g

KEYED: Key A Key A

CURRENT RATING: 13 13

CONTACT SIZE: 16 16



PART NUMBER:	0462-201-16141	0460-202-16141
WIRE SIZE:	16-20AWG	16-20AWG
MATERIAL:	NICKEL	NICKEL
WEIGHT:	0.6g	0.55g
CURRENT RATING:	13	13
MPQ:	5000pcs/bag	5000pcs/bag



PART NUMBER:	0462-201-1631	0460-202-1631
WIRE SIZE:	16-20AWG	16-20AWG
MATERIAL:	GOLD	GOLD
WEIGHT:	0.7g	0.6g
CURRENT RATING:	13	13
MPQ:	5000pcs/bag	5000pcs/bag



PART NUMBER:	0462-209-16141	0460-215-16141
WIRE SIZE:	14AWG	14AWG
MATERIAL:	NICKEL	NICKEL
WEIGHT:	0.6g	0.55g
CURRENT RATING:	13	13
MPQ:	5000pcs/bag	5000pcs/bag



*CUSTOMIZED W/O GREEN BAND

PART NUMBER:	0462-209-16141B	0460-215-16141B
WIRE SIZE:	14AWG	14AWG
MATERIAL:	NICKEL	NICKEL
WEIGHT:	0.6g	0.55g
CURRENT RATING:	13	13
MPQ:	5000pcs/bag	5000pcs/bag



PART NUMBER:	CKK012-1.5FNB2 1062-16-0122	CKK012-1.5MNB2 1060-16-0122
WIRE SIZE:	14-18AWG	14-18AWG
MATERIAL:	NICKEL	NICKEL
WEIGHT:	0.6g	0.5g
CURRENT RATING:	13	13
MPQ:	4000pcs/reel	4000pcs/reel



PART NUMBER:	0462-221-1631
WIRE SIZE:	16-20AWG
MATERIAL:	GOLD
WEIGHT:	0.6g
CURRENT RATING:	13
MPQ:	5000pcs/bag



DTM Series



DTM series connectors offer solutions to your smaller wire gauge applications. Building on the DT design strengths, the DTM connector line was developed to fill the need for lower amperage, multi-pin connectors. The DTM series offers the designer the ability to use multiple size 20 contacts, each with 7.5 amp continuous capacity, within a single shell.



PART NUMBER:	DTM06-2S+WM-2S	DTM04-2P+WM-2P
L*W*H (mm):	27.56*12.07*12.9	41.15*16.54*16.21
WEIGHT:	5.2g	7.8g
KEYED:	No	No
CURRENT RATING:	7.5	7.5
CONTACT SIZE:	20	20



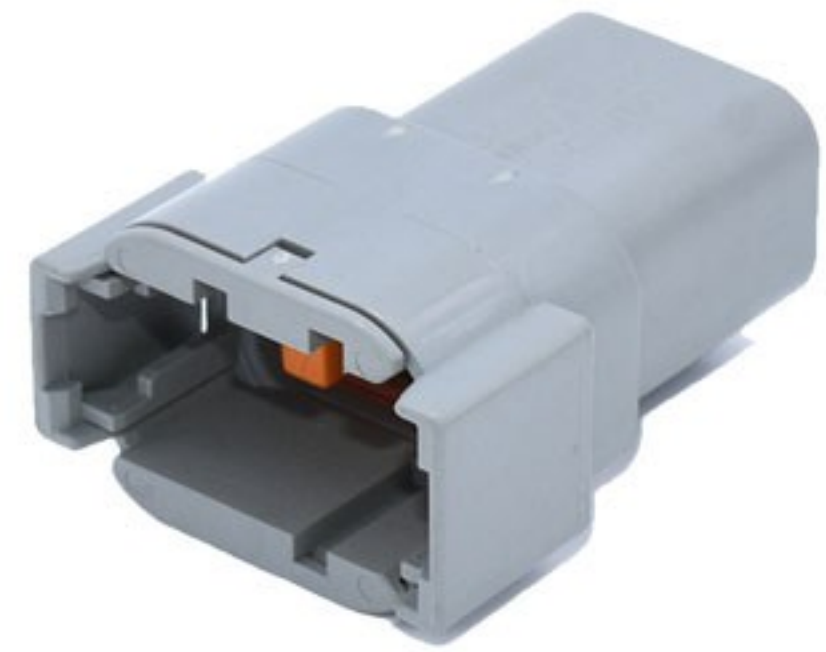
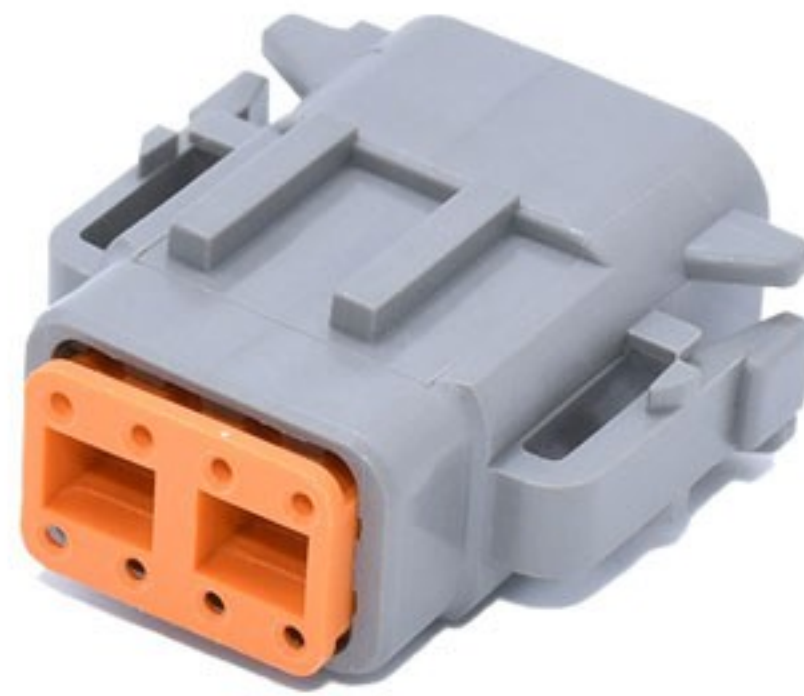
PART NUMBER:	DTM06-3S+WM-3S	DTM04-3P+WM-3P
L*W*H (mm):	27.56*16.26*14	41.15*20.73*16.21
WEIGHT:	6.2g	9.4g
KEYED:	No	No
CURRENT RATING:	7.5	7.5
CONTACT SIZE:	20	20



PART NUMBER:	DTM06-4S+WM-4S	DTM04-4P+WM-4P
L*W*H (mm):	30.1*15.24*17.65	43.69*19.2*19.61
WEIGHT:	7.8g	11.2g
KEYED:	No	No
CURRENT RATING:	7.5	7.5
CONTACT SIZE:	20	20



PART NUMBER:	DTM06-6S+WM-6S	DTM04-6P+WM-6P
L*W*H (mm):	30.1*15.24*20.75	43.69*19.2*23.8
WEIGHT:	9.4g	12.8g
KEYED:	No	No
CURRENT RATING:	7.5	7.5
CONTACT SIZE:	20	20



PART NUMBER:	DTM06-8SA+WM-8S	DTM04-8PA+WM-8P
L*W*H (mm):	30.1*31.62*15.24	43.69*31.62*20.22
WEIGHT:	11.6g	16.2g
KEYED:	Key A	Key A
CURRENT RATING:	7.5	7.5
CONTACT SIZE:	20	20



PART NUMBER:	DTM06-8SA+WM-8S	DTM04-6P+WM-6P
L*W*H (mm):	30.1*40.01*15.24	43.69*40.01*20.22
WEIGHT:	14.8g	20.4g
KEYED:	Key A	Key A
CURRENT RATING:	7.5	7.5
CONTACT SIZE:	20	20



PART NUMBER:	0462-201-2031	0460-202-2031
WIRE SIZE:	20AWG	20AWG
MATERIAL:	GOLD	GOLD
WEIGHT:	0.4g	0.4g
CURRENT RATING:	7.5	7.5
MPQ:	5000pcs/bag	5000pcs/bag



PART NUMBER:	0462-201-20141	0460-202-20141
WIRE SIZE:	20AWG	20AWG
MATERIAL:	NICKEL	NICKEL
WEIGHT:	0.4g	0.35g
CURRENT RATING:	7.5	7.5
MPQ:	5000pcs/bag	5000pcs/bag



PART NUMBER:	0462-005-2031	0460-010-2031
WIRE SIZE:	16-18AWG	16-18AWG
MATERIAL:	GOLD	GOLD
WEIGHT:	/	/
CURRENT RATING:	7.5	7.5
MPQ:	5000pcs/bag	5000pcs/bag

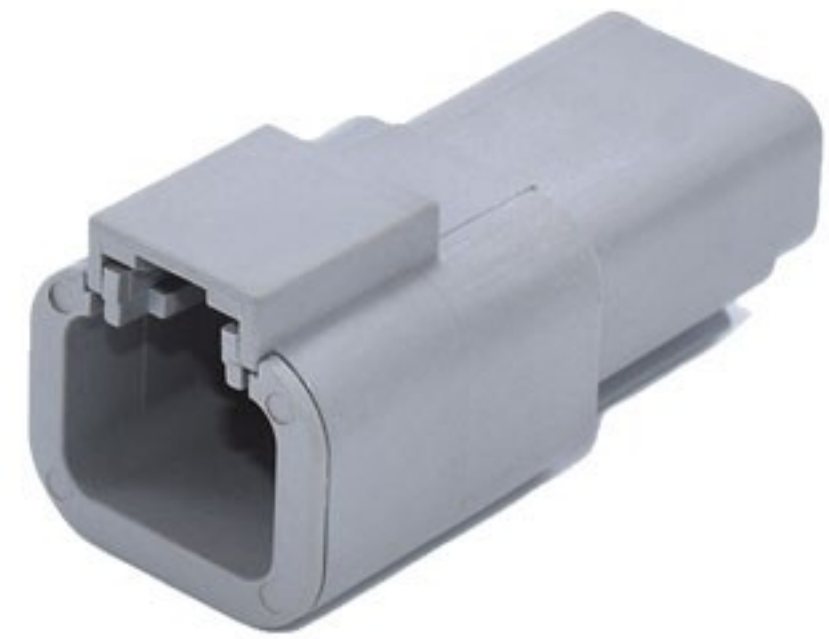
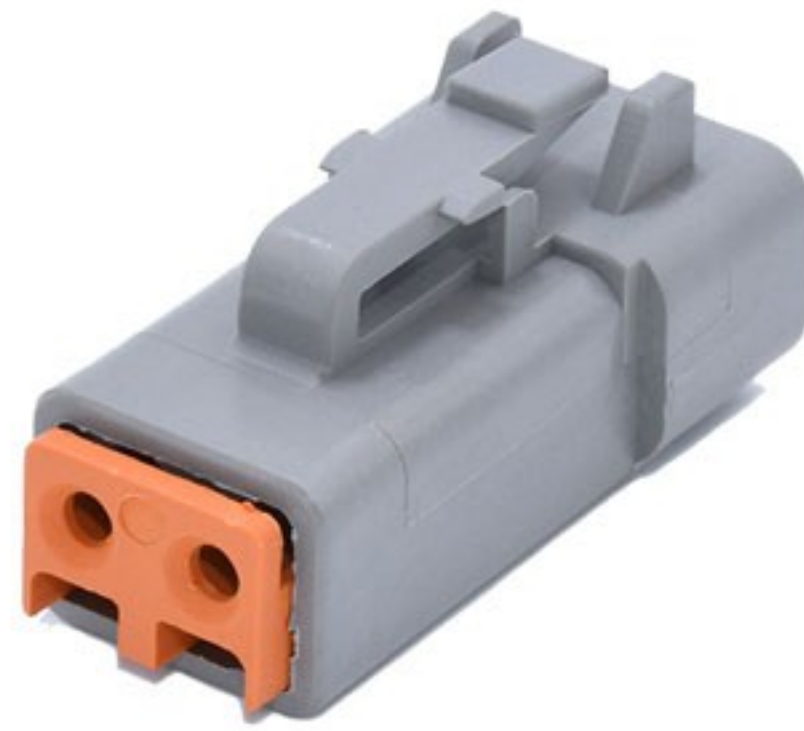


PART NUMBER:	CKK002-1.2FNB1 1062-20-0122	CKK002-1.2MNB1 1060-20-0122
WIRE SIZE:	16-22AWG	16-22AWG
MATERIAL:	NICKEL	NICKEL
WEIGHT:	0.5g	0.5g
CURRENT RATING:	7.5	7.5
MPQ:	5000pcs/reel	4000pcs/reel



DTP Series





PART NUMBER:	DTP06-2S+WP-2S	DTP04-2P+WP-2P
L*W*H (mm):	34.65*18.59*18.06	47.27*22.15*22.07
WEIGHT:	9.2g	15.2g
KEYED:	No	No
CURRENT RATING:	25	25
CONTACT SIZE:	12	12



PART NUMBER:	DTP06-4S+WP-4S	DTP04-4P+WP-4P
L*W*H (mm):	34.65*22.05*24.38	47.27*26.92*26.62
WEIGHT:	12.8g	22g
KEYED:	No	No
CURRENT RATING:	25	25
CONTACT SIZE:	12	12



PART NUMBER:	0462-203-12141B	0460-204-12141B
WIRE SIZE:	12-14AWG	12-14AWG
MATERIAL:	NICKEL	NICKEL
WEIGHT:	1.3g	1.3g
CURRENT RATING:	25	25
MPQ:	5000pcs/bag	5000pcs/bag



PART NUMBER:	CKK002-2.5FNB2 1062-12-0166	CKK002-2.5MNB2 1060-12-0166
WIRE SIZE:	12-14AWG	12-14AWG
MATERIAL:	NICKEL	NICKEL
WEIGHT:	1.3g	1.1g
CURRENT RATING:	25	25
MPQ:	2000pcs/reel	2000pcs/reel



PART NUMBER:	0462-210-1231B	0460-220-1231B
WIRE SIZE:	12-14AWG	12-14AWG
MATERIAL:	GOLD	GOLD
WEIGHT:	/	/
CURRENT RATING:	25	25
MPQ:	5000pcs/bag	5000pcs/bag



PART NUMBER:	0460-256-12233
WIRE SIZE:	16-18AWG
MATERIAL:	GOLD
WEIGHT:	/
CURRENT RATING:	25
MPQ:	5000pcs/bag



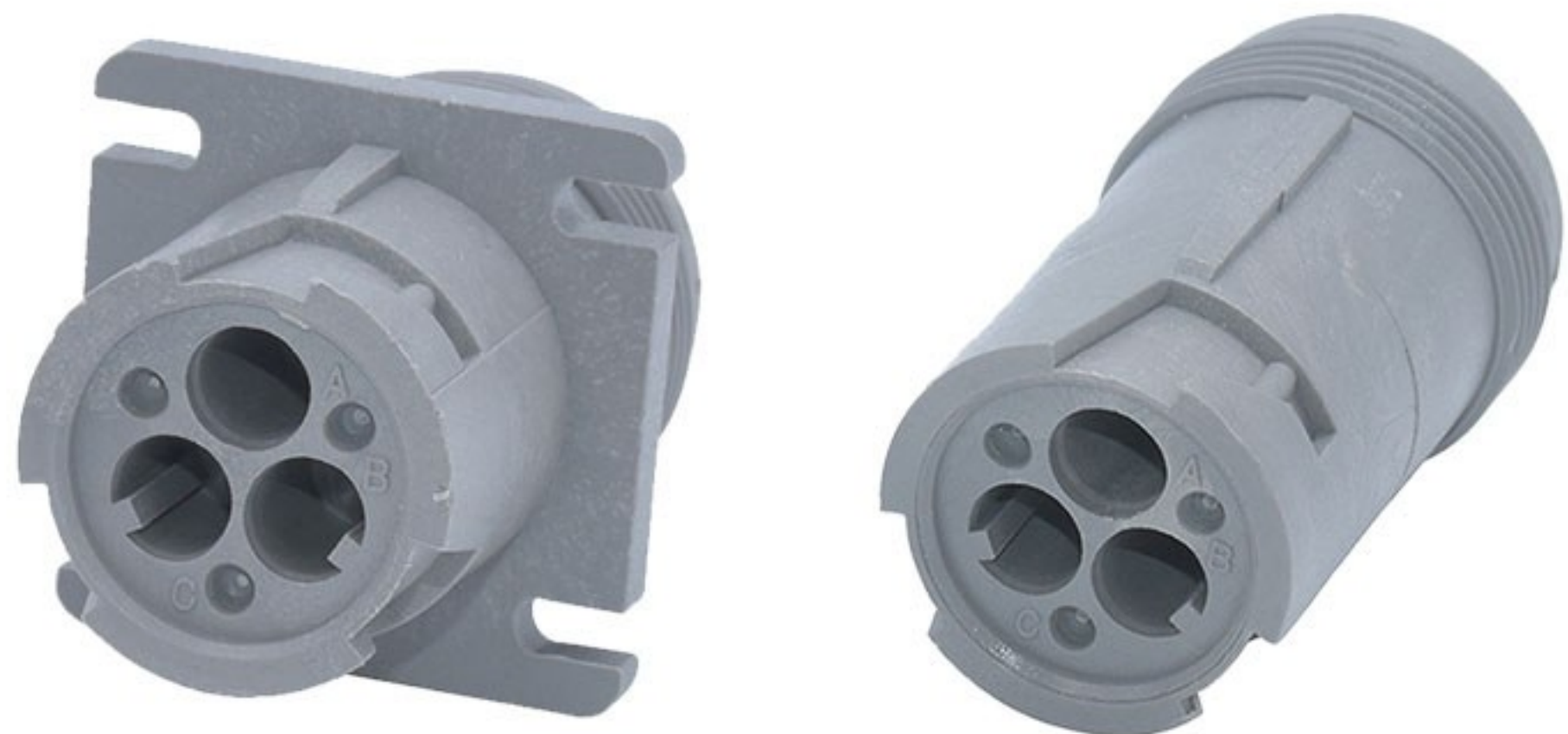
HD10 Series



The HD10 series is an environmentally sealed, thermoplastic, and cylindrical connector series. With arrangements from 3 to 9 cavities, HD10 connectors accept size 4, 12, or 16 contacts and are available either in-line or flanged. HD10 connectors are heavily used for diagnostic applications and are available with or without a coupling ring.



PART NUMBER:	HD16-3-96S
L*Φ (mm):	40.87*27.15
WEIGHT:	20g
KEYED:	No
CURRENT RATING:	13
CONTACT SIZE:	16



PART NUMBER:	HD10-3-96P	HD14-3-96P
L*Φ (mm):	41.63*21.62	41.63*21.62
WEIGHT:	22g	20g
KEYED:	No	No
CURRENT RATING:	13	13
CONTACT SIZE:	16	16



PART NUMBER:	HD16-9-1939S
L*Φ (mm):	40.87*40.47
WEIGHT:	40.5g
KEYED:	No
CURRENT RATING:	13
CONTACT SIZE:	16



PART NUMBER:	HD10-9-1939P-B022	HD10-9-1939P
L*Φ (mm):	41.63*32.54	41.63*32.54
WEIGHT:	51g	40.5g
KEYED:	No	No
CURRENT RATING:	13	13
CONTACT SIZE:	16	16



PART NUMBER:	HD16-9-1939S-P080
L*Φ (mm):	40.87*40.47
WEIGHT:	40.5g
KEYED:	No
CURRENT RATING:	13
CONTACT SIZE:	16



PART NUMBER:	HD10-9-1939P-BP03	HD10-9-1939P-P080
L*Φ (mm):	41.63*32.54	41.63*32.54
WEIGHT:	51g	40.5g
KEYED:	No	No
CURRENT RATING:	13	13
CONTACT SIZE:	16	16



PART NUMBER:	0462-201-16141	0460-202-16141
WIRE SIZE:	16-20AWG	16-20AWG
MATERIAL:	NICKEL	NICKEL
WEIGHT:	0.6g	0.55g
CURRENT RATING:	13	13
MPQ:	5000pcs/bag	5000pcs/bag



PART NUMBER:	0462-201-1631	0460-202-1631
WIRE SIZE:	16-20AWG	16-20AWG
MATERIAL:	GOLD	GOLD
WEIGHT:	0.7g	0.6g
CURRENT RATING:	13	13
MPQ:	5000pcs/bag	5000pcs/bag



PART NUMBER:

CKK012-1.5FNB2
1062-16-0122

CKK012-1.5MNB2
1060-16-0122

WIRE SIZE:

14-18AWG

14-18AWG

MATERIAL:

NICKEL

NICKEL

WEIGHT:

0.6g

0.5g

CURRENT RATING:

13

13

MPQ:

4000pcs/reel

4000pcs/reel



PART NUMBER:

1062-16-0144

1060-16-0144

WIRE SIZE:

14-18AWG

14-18AWG

MATERIAL:

GOLD

GOLD

WEIGHT:

/

/

CURRENT RATING:

13

13

MPQ:

/

/



PART NUMBER:	0462-203-04141	0462-203-08141
WIRE SIZE:	6AWG	8-10AWG
MATERIAL:	NICKEL	NICKEL
WEIGHT:	/	/
CURRENT RATING:	100	60
MPQ:	5000pcs/bag	5000pcs/bag



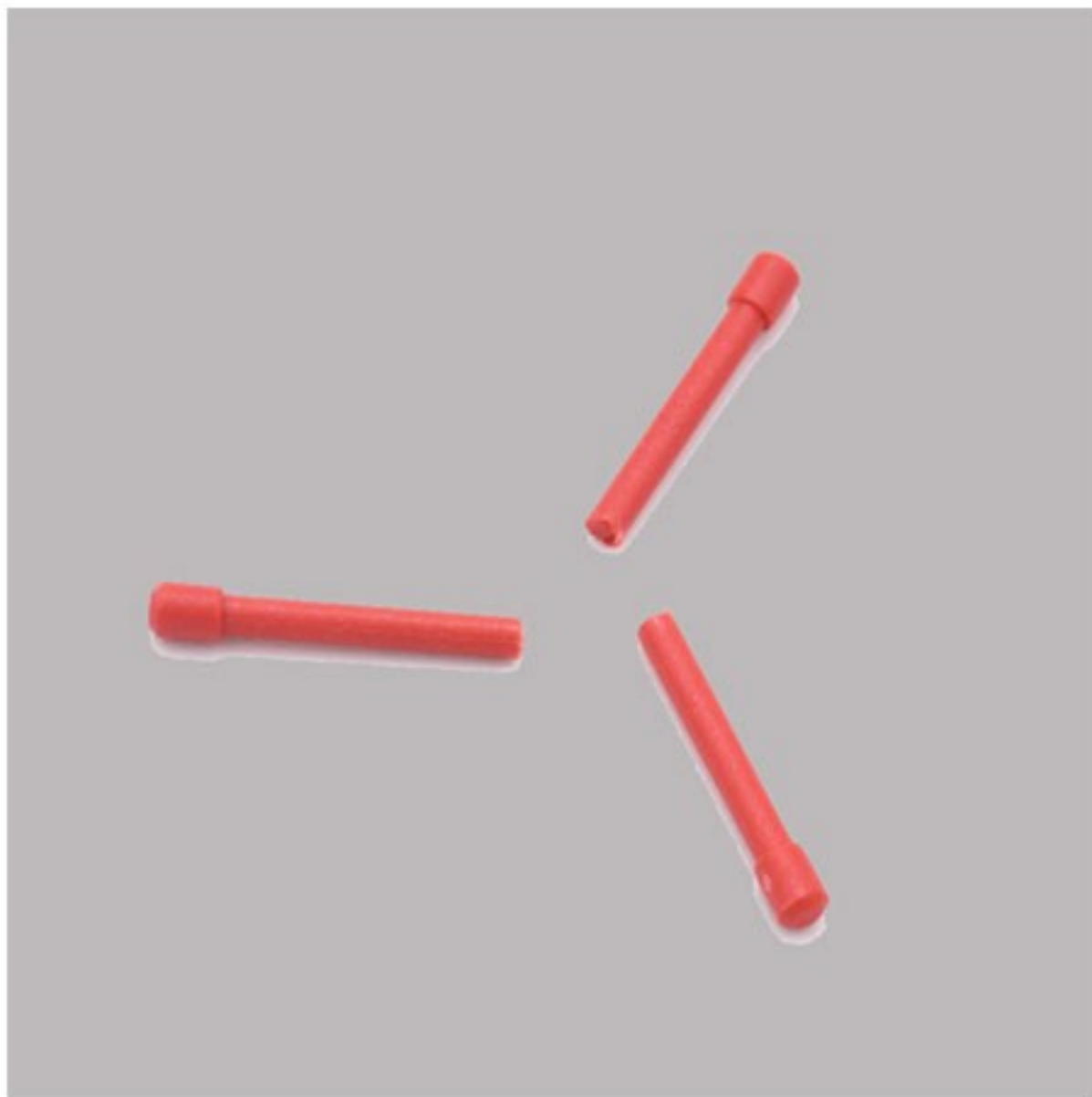
PART NUMBER:	5962-203-04141	5960-203-04141
WIRE SIZE:	16-18AWG	4AWG
MATERIAL:	NICKEL	NICKEL
WEIGHT:	/	/
CURRENT RATING:	100	100
MPQ:	5000pcs/bag	5000pcs/bag



Accessories



Open cavities provide pathways for contaminants to enter the connectors. To maintain seal integrity, any unused cavity must be filled with the appropriate size sealing plug.



Contact Size: 20
Materials : Plastic
Color : Red
Series: HD30 Series,
HDP20 Series,
DRC Series,
WT Series,
DTM Series,
DTP Series,
DRB Series,
STRIKE Series

P/N

0413-204-2005



Step 1:
 Holding the sealing plug with large diameter end away from the connector, gently apply downward pressure to force the seal-ing plug into the cavity.



Step 2:
 With perpendicular motion, apply downward pressure to the large diameter end of the sealing plug.



Step 3:
 Apply pressure until seal-ing plug is forced to stop by contact with rear grommet. Visually inspect the sealing plug to confirm it is flush with cavity opening.

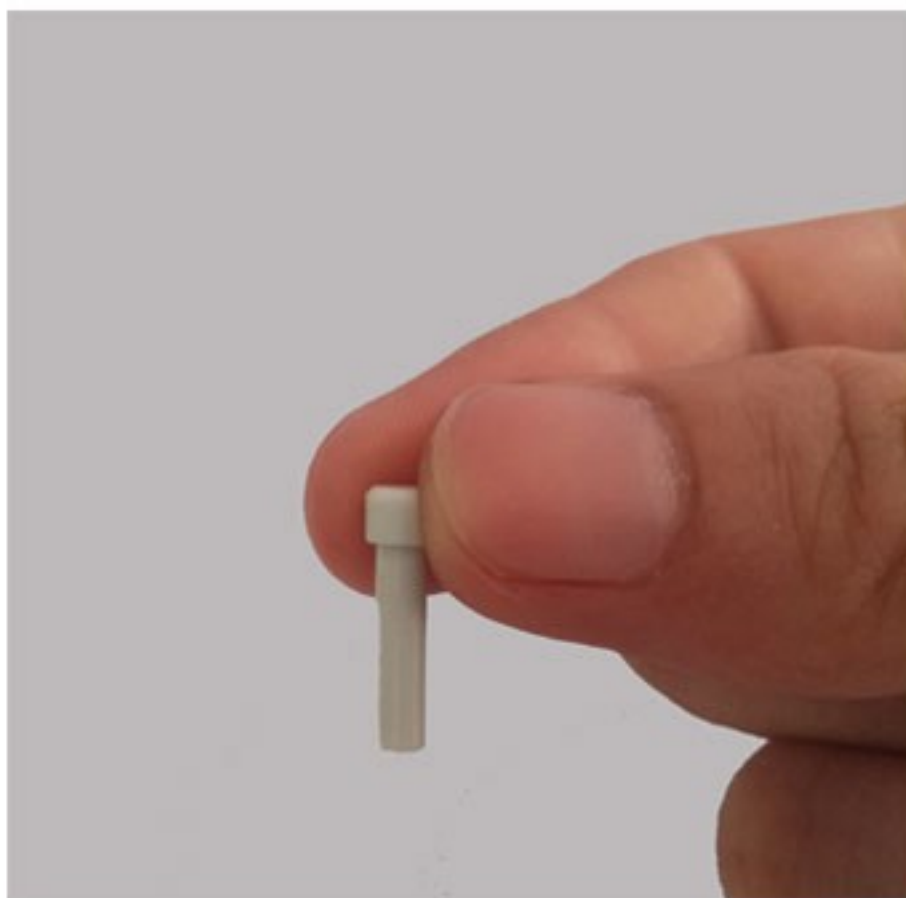
Open cavities provide pathways for contaminants to enter the connectors. To maintain seal integrity, any unused cavity must be filled with the appropriate size sealing plug.



Contact Size: 12, 16
Materials : Plastic
Color : White
Series: HD30 Series,
 HDP20 Series,
 DRC Series,
 HD10 Series,
 WT Series,
 DT Series,
 DTP Series,
 DTHD Series,
 DRB Series,
 DTV Series,
 AEC Series,
 STRIKE Series

P/N

114017



Step 1:
 Holding the sealing plug with large diameter end away from the connector, gently apply downward pressure to force the seal-ing plug into the cavity.



Step 2:
 With perpendicular motion, apply downward pressure to the large diameter end of the sealing plug.



Step 3:
 Apply pressure until seal-ing plug is forced to stop by contact with rear grommet. Visually inspect the sealing plug to confirm it is flush with cavity opening.

Mounting clips are installed on the receptacle to mount DT series connectors. To meet design needs, the clips are available for several configurations and in plastic, stainless steel, or steel with zinc plating.



P/N 1027-003-1200



P/N 1027-008-1200



P/N 1011-026-0205

PART NUMBER	CAVITY ARRANGEMENT	MOUNTING DIRECTION	COLOR/MATERIAL	HOLE O.D INCHES (MM)
1027-003-1200	DT 2, 3, 4, 6, 12 DTM, DTP (ALL)	STRAIGHT	STAINLESS STEEL	.433 (11.0)
1027-008-1200	DT 2, 3, 4, 6, 12 DTM, DTP (ALL)	SIDE	STEEL W/ ZINC PLATING	.433 (11.0)
1011-026-0205	DT 2, 3, 4, 6, 12 DTM, DTP (ALL)	STRAIGHT	GRAY PLASTIC	.200 (5.08)

For field service, prototype, and low-volume production, there are several easy-to-use hand crimp tools for both solid barrel and stamped & formed contacts.



P/N DT TOOL

P/N DTM TOOL

P/N DTP TOOL

PART NUMBER	CONTACT SIZE	COLOUR	WEIGHT	MATERIAL
DT TOOL	16-20	RED	300.2g	HIGH CARBON STEEL
DTM TOOL	20-22	RED	303.2g	HIGH CARBON STEEL
DTP TOOL	12	RED	298.6g	HIGH CARBON STEEL

The HDT-48-00, the most commonly used tool for solid contacts, crimps a wide range of contact sizes. It provides a symmetrical four indent crimp, is compact and easy-to-use for field service, yet sturdy and reliable enough for low volume production.



BLUE



P/N	Contact Size	Weight	Crimp Type
HDT-4800 Blue & Grey	12,16,20	1kg includ. package	Four indent crimp



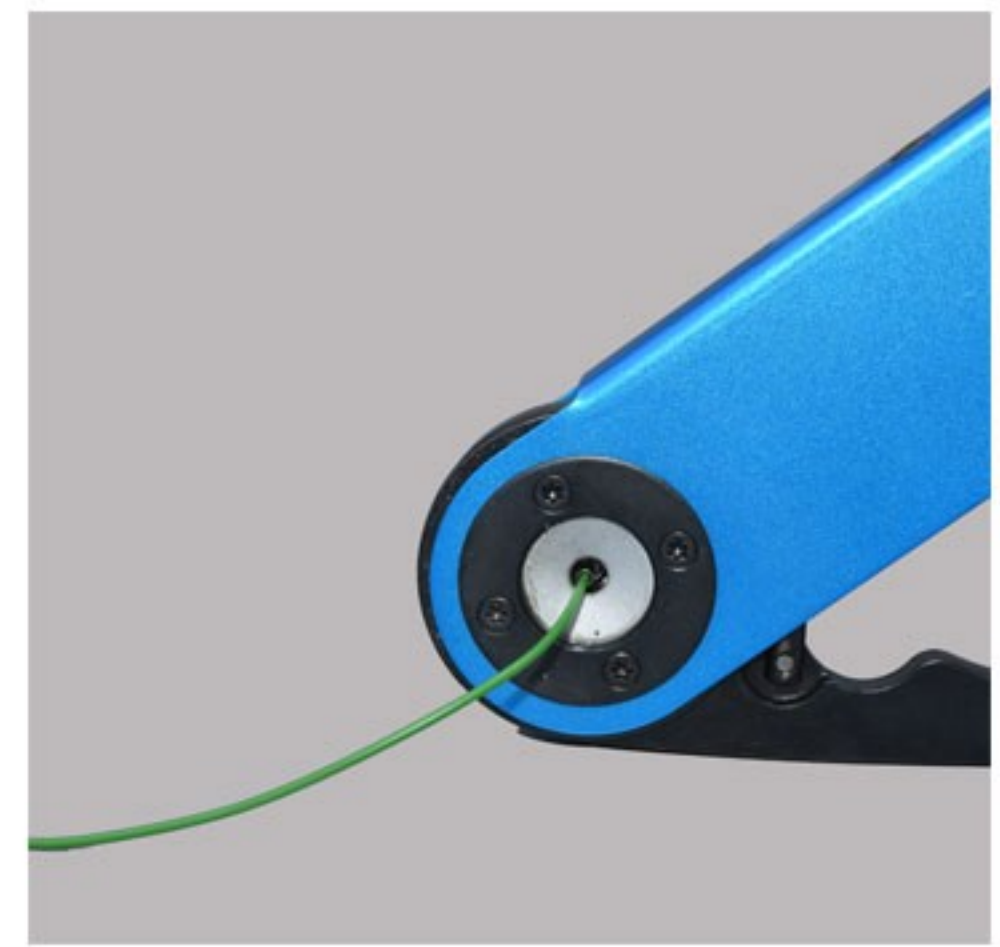
Step 1:

- Strip insulation from wire.
- Raise selector knob and rotate until arrow is aligned with wire size to be crimped.
- Loosen locknut, turn adjusting screw in until it stops.



Step 2:

Insert contact with barrel up. Turn adjusting screw counter clockwise until contact is flush with indenter cover. Tighten locknut.



Step 3:

- Insert wire into contact. Contact must be centered between indentors. Close handles until crimp cycle is completed.
- Release handles and remove crimped contact.

DEUTSCH removal tools are designed to simplify contact removal and field service repair in connectors that utilize a round shoulder contact retention system. The removal tools are required for wire removal in the DTHD, Jiffy Splices, HD10, HDP20, HD30, DRC, AEC, and WT series.



P/N 0411-240-2005



P/N 0411-310-1605



P/N 0411-291-1405



P/N 114010



P/N 114009-ZZ

0411-240-2005	Size 20	20-22 AWG	RED
0411-310-1605	Size 16	16-20AWG	LIGHT BLUE
0411-291-1405	Size 16	14-16AWG	GREEN
114010	Size 12	12 AWG	YELLOW
114009-ZZ	Size 4	6 AWG	WHITE

Removal tools are compact, easy-to-use, and manufactured of heavy duty plastic to remove contacts without damage to the wire, insulation, connector seals, or connector body.

Contact Insertion



Step 1:
Grasp crimped contact approximately one inch behind the contact barrel.

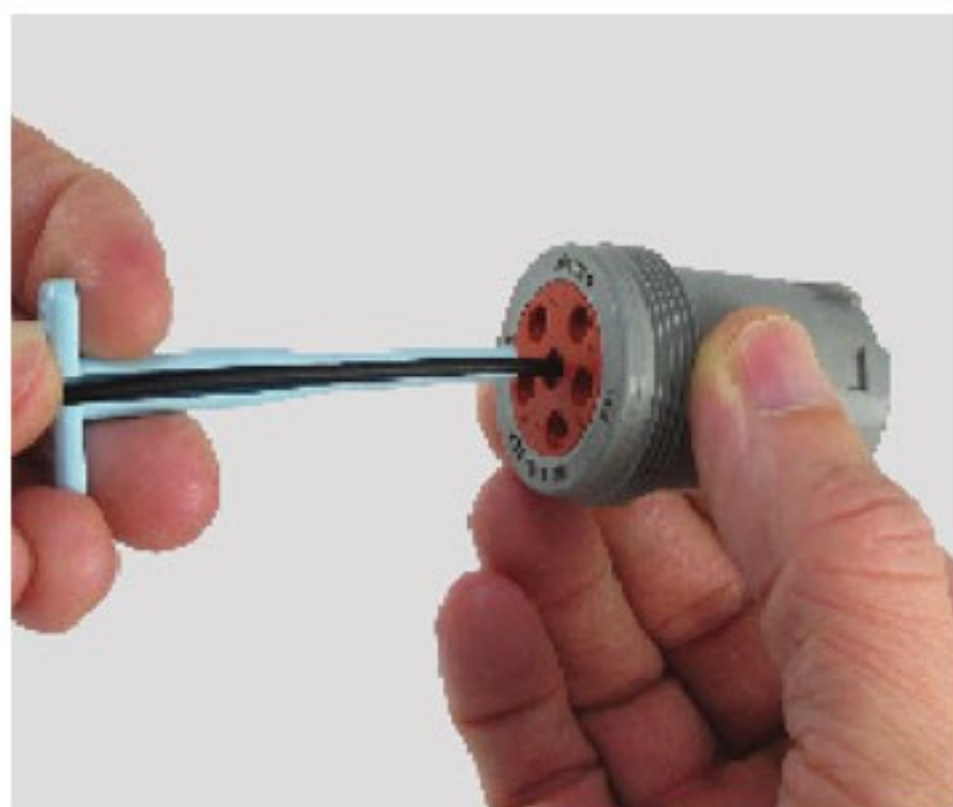


Step 2:
Hold connector with rear grommet facing you.

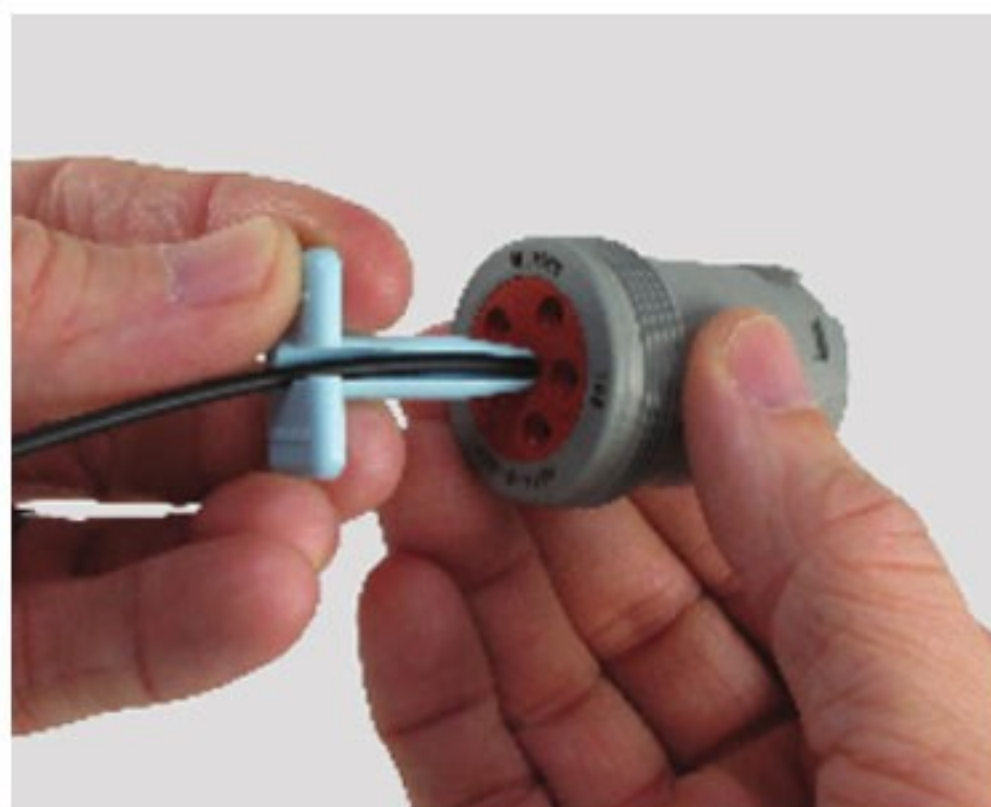


Step 3:
Push contact straight into connector grommet until a click is felt. A slight tug will confirm that it is properly locked in place.

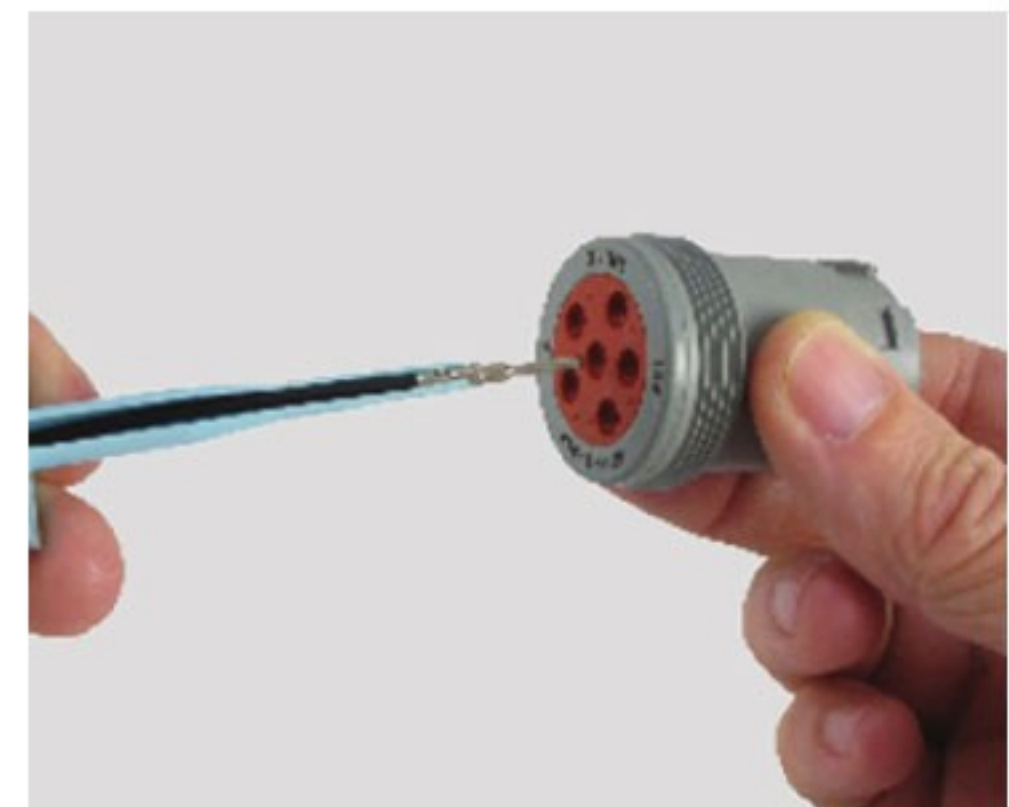
Contact Removal



Step 1:
With rear insert toward you, snap appropriate size removal tool over the wire of contact to be removed.



Step 2:
Slide tool along the wire into the insert cavity until it engages contact and resistance is felt.



Step 3:
Pull contact wire assembly out of connector.